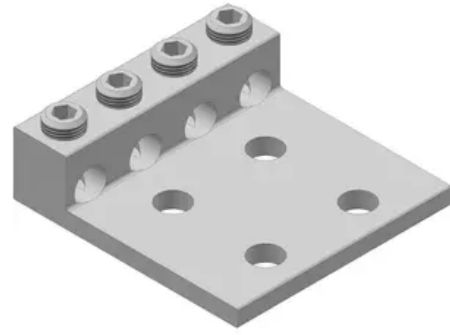


## Dual Rated Solderless Connector, wire range 350 AWG -6 AWG.

By Connector Mfg. Co. (CMC)

Catalog # [L4M4-350](#)



Dual Rated Solderless Connector, wire range 350 AWG -6 AWG. TYPE:L4M4 / L4D4.CMC® Four conductor solderless connectors are manufactured from high strength 6061-T6 aluminum alloy to insure both maximum strength and conductivity. They are dual rated for both copper and aluminum conductors and are electro tin plated to provide low contact resistance and protection against corrosion. Assembly can be made with only a screwdriver or allen wrench and the connectors are reusable. 90° C Rated (486B Listed). UL listed and CSA certified.

### Features

- 90° C Rated (486B Listed)
- UL listed
- CSA certified

### General

Catalog Number	L4M4-350
Material	Aluminum
Type	Bolted Lugs & Terminals
UPC	192663018185

### Dimensions

Dimensions	4.5 in x 4.5 in x 1.38 in
Height	1.38 in
Length	4.5 in
Width	4.5 in

### Conductor Related

Conductor - Copper Str Size Range	350 Kcmil-6 AWG
-----------------------------------	-----------------

### Product Assets

[Sales Drawings - C00494046-S](#)  
[Specifications - L4M4350](#)